

# The easiest hose fitting technology

# BURGAFFLIP®

This hose/fitting combination is tested according to SAE J2064 and guarantees at least 74 % less permeation compared to existing products on the market.



For further detailed technical information, please contact us:

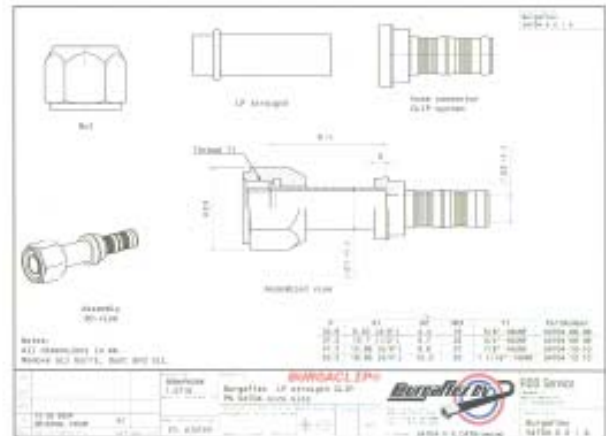
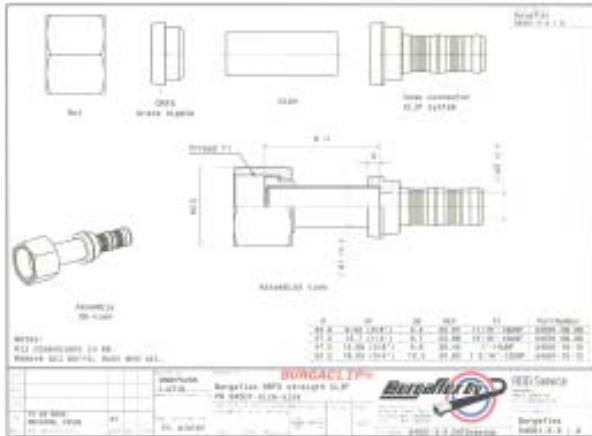
Burgaflex B.V.  
P.O. Box 238  
4870 AE ETTEN-LEUR  
THE NETHERLANDS  
Tel: +31-(0)76-5035000  
Fax: +31-(0)76-5013558  
E-mail: [info@burgaflex.nl](mailto:info@burgaflex.nl)  
[www.burgaflex.com](http://www.burgaflex.com)



Burgaflex B.V. - Burgaflex UK - Burgaflex Deutschland - Burgaflex North America

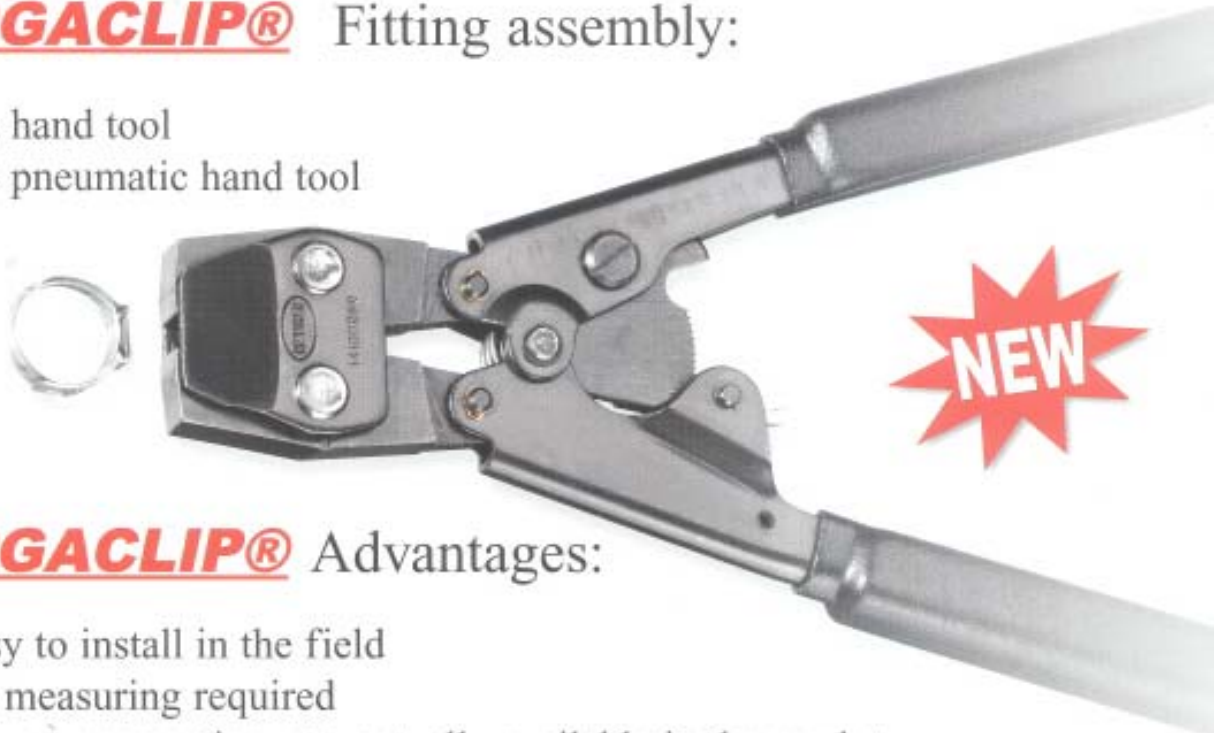
## **BURGACLIP®** Fitting availability:

- ORFS male & female in straight - 45° and 90°
- O'ring male & female in straight - 45° and 90°
- Splicers with high/low charge port, etc.



## **BURGACLIP®** Fitting assembly:

- Via hand tool
- Via pneumatic hand tool



## **BURGACLIP®** Advantages:

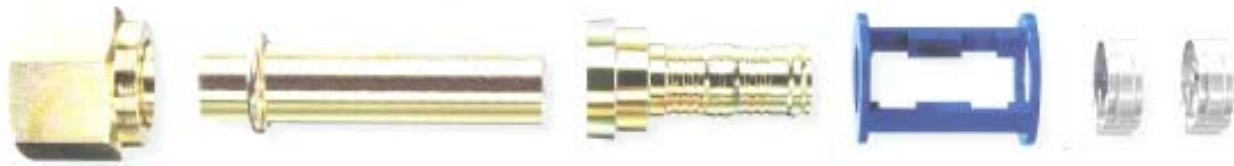
- Easy to install in the field
- No measuring required
- Lowest permeation rate actually available in the market
- Hose can be assembled with **BURGACLIP®** fittings as well as with standard small O.D. hose fittings
- Easy to install in motor compartments and many more....



**NEW**

We at Burgaflex are very happy to be able to introduce the latest hose fitting technology to the market place under its name:

**BURGAFLIP®**



Together with this extremely advanced technology, we introduce our latest development in hose technology with the presentation of our super low permeation hose type 3090-X.

**AIR CONDITIONING HOSE**

**Burgaflex-Galaxy® Barrier 3090**  
Super Low Permeation



- ▲ Four (4) times the reduction in R134A permeation vs. current Galaxy 3090
- ▲ Dimensionally equivalent to Burgaflex 3090 + Goodyear 488D hose
- ▲ Improved Butyl cover provides significant reduction in moisture ingestion
- ▲ Incorporates an improved Polyamide barrier between two elastomeric layers
- ▲ Compatible with R134A, -404A and most refrigerant blends and compressor lubricants
- ▲ Designed to operate in the temperature range of -40° C to +135° C (-40° F to +275° F)

SIZE	SIZE		INSIDE DIAMETER				OUTSIDE DIAMETER				WEIGHT	
	INCH	MM	min	max	min	max	min	max	min	max	lb/ft	kg/m
9	5/16	8	0.334	0.358	7.8	9.8	8.550	8.600	14.3	15.2	0.33	0.13
9	1/2	12	0.480	0.447	12.2	11.2	8.840	8.700	18.8	17.4	0.42	0.16
10	1/2	12	0.490	0.510	12.8	12.8	8.710	8.790	18.8	19.0	0.43	0.16
12	5/8	16	0.615	0.650	15.6	16.6	8.310	8.300	21.1	24.1	0.23	0.09

This hose/fitting combination, which is tested according to SAE J2064, guarantees at least 74 % less permeation compared to existing products on the market.

